



**Private  
Smith  
goes  
to  
Washington...**



## *Well, not Washington precisely . . . . .*

More precisely, Arlington Hall—five miles down a beautiful, swift, tree-lined road from Washington, the Nation's Capital.

Then down a winding, scenic, cool drive to the portico of the stately mansion which used to be an exclusive girls' boarding school, but which is now an installation of the U. S. Army Signal Corps.

Private Smith is a Wac—and at this moment a particularly proud one. She alights from the bus, crosses the lovely stretch of walk, opens the great door and walks into the subdued bustle of Arlington Hall.

This is no ordinary Army post. There is an atmosphere of excitement and mystery here which starts her blood tingling even as she crosses the threshold. This is the moment she has looked forward to since her induction five weeks ago.

She is one of the women selected by the Signal Corps, and carefully trained for a tremendously important, highly confidential job closely related to the "fighting front". Amidst keen competition she has proved her ability, and she has proved her loyalty and integrity to the satisfaction of Army Intelligence. Now she is ready to begin on one of the most vital jobs of the war.

Other women are needed. Perhaps **you** can meet the rigid specifications. There is no greater satisfaction than to be entrusted with a vital part in the winning of the war. **Join the Women's Army Corps; serve with the Signal Corps at Arlington Hall, Arlington, Virginia.**



*Arlington Hall* has been acclaimed as one of the most beautiful buildings in the South. Formerly the home of Arlington Hall Junior College, it now provides administrative offices for the Signal Corps at Arlington, Virginia.



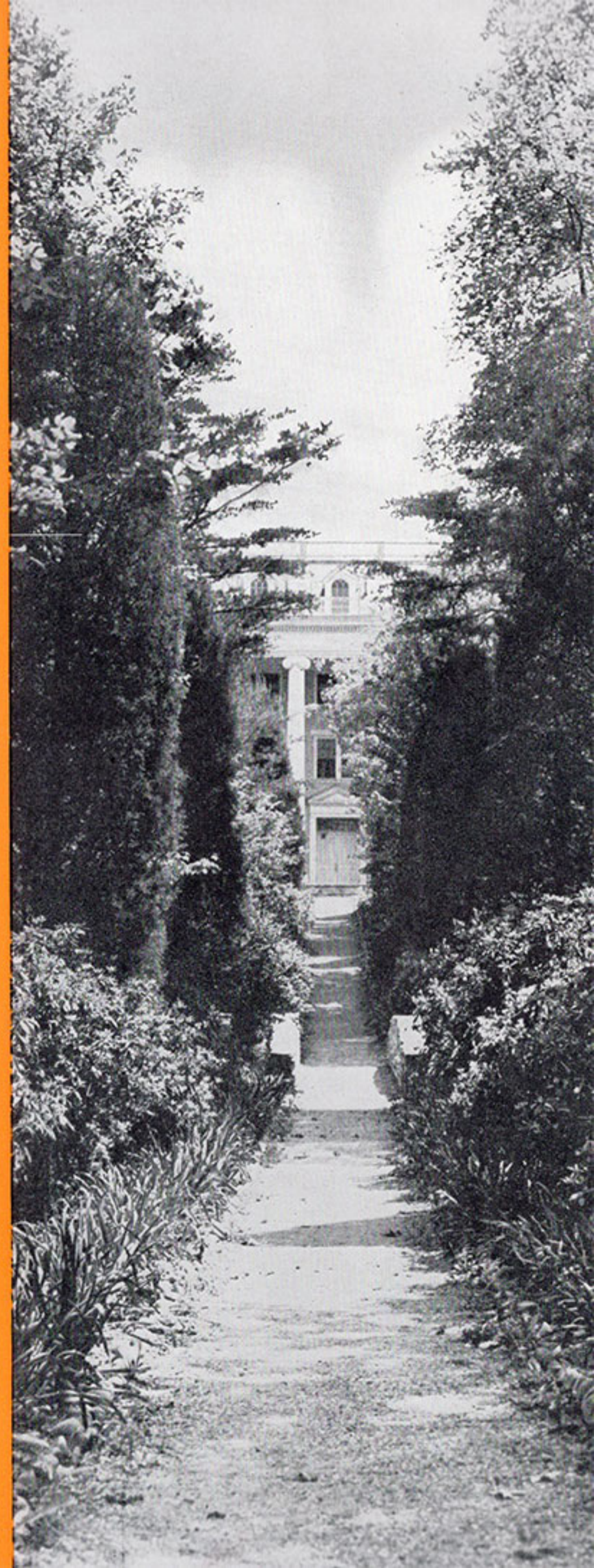
*Headquarters Building* The vastness of the beautiful Headquarters Building and the beauty of the landscaped lawns is shown in this view across the back court with the East Wing in the distance. Entrances to the building are conveniently located.

*The East Wing* of Headquarters Building houses the employees' cafeteria and provides offices on the second floor. Its beautiful porches are shaded by trees and carefully selected shrubbery.

*The Back Court* of Headquarters Building, as seen from a shady spot on the beautiful Kentucky bent-grass lawn.



*In Addition* to the variety of foliage and shrubbery, perennials are in evidence everywhere. The landscape shown here is the flagstone walk, bordered by peonies.



**Where**  
*you live...  
and how*

## **BUILDINGS**

New two-story buildings of graystone with hardwood floors. Laundry in each building; central heating system. Attractively furnished dayrooms; bathtubs and showers; individual wall and foot lockers; comfortable beds, and many other feminine comforts.

## **THE GROUNDS**

This campus, renowned for beauty throughout the Nation, is situated in a lovely valley and surrounded by rustic woodland. Its natural beauty is enhanced by expert landscaping.

## **YOUR PERMANENT LOCATION**

Arlington Hall is situated on beautiful and historic Lee Boulevard, the District's most modern highway. Although it is aloof from the bustle of Washington, a 20-minute bus ride—past Arlington National Cemetery, across the Potomac via Memorial Bridge—will bring you into the very heart of the Nation's Capital!

## **MEALTIME**

Tempting, nutritious dishes are prepared by expert chefs and bakers in carefully inspected kitchens, and served (all you can eat!) in large, sunny mess halls reserved for military personnel.

## **WHAT YOU'LL WEAR**

Smartly tailored dress uniforms. They're meticulously fitted for each individual, to assure trim appearance. They're made of khaki cotton and wool gabardine, and are provided in sufficient number to allow frequent change. Carefully fitted shoes assure complete foot comfort.



**Your job**  
*at*  
**Arlington Hall**

Appointment to Arlington Hall is for the duration. Each Wac selected for such duty will have a definite job waiting for her and will be thoroughly trained for that job. This training will fit her for a good postwar position.

The work done by the Arlington Hall Wac is of a highly confidential nature—in operations—and is closely associated to the fighting front. Therefore only a person of unquestionable loyalty and integrity and the highest moral standards can be considered. Assignment is contingent upon the findings of an Army Intelligence investigation.

The work is intensely interesting, and the working conditions are excellent—conducive to greatest efficiency.



International Business Machine used by Wacs in their work. Skillful operators will be much in demand after the war.